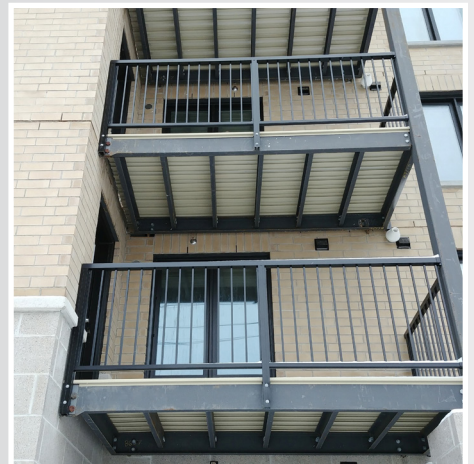


SPECIFICATION SHEET

WATERPROOF

ALUMINUM DECKS



PRODUCT TYPE:

Aluminum Decking

- Tensile strength > 28,000 psi; Yield strength > 23,000 psi (compared to under 2,000 psi for composite deck materials)
- Engineered Testing completed by Applied Testing meeting both IRC and IBC codes for decking products
- Deflection less than 0.031 inches on 30" centers
- Span: Recommended 12" - 24" on center. 30" on center max
Minimum 1/8" drop per foot in the direction of decking run and water runoff
- High-strength 6063-T6 aluminum for strength and reliability, decking material tested to 240 psf live-load 30" centers
- Maintenance-free - does not twist, warp, or fade like other decking products, so every board appears like new for decades
- Deck boards join together under a pressure-locked seal to create a waterproof* joint and gapless floor
- Built-in continuous gutter in each board for water management in unlikely event that moisture gets past the pressure lock
- Unique design of the boards creates a dry area underneath for additional living space with second-story decks
- Installs on treated or untreated wood joists in about the same time as wood decks
- NO Painting - Staining - Waterproofing - Splintering - Cracking - Rotting - Warping - Decaying - Knot Holes - Bonding - Glue Issues
- Hidden fasteners eliminate worry about nails or screws popping



NON-SKID

Embedded texture in the heavy-duty powder-coated finish makes each board non-skid.

NON-COMBUSTABLE

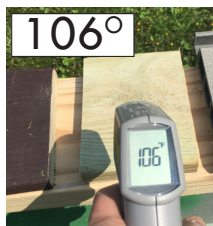
Unlike composites, vinyl, or wood decks, aluminum does not ignite or burn. Won't deteriorate from UV rays.

COOL TO THE TOUCH

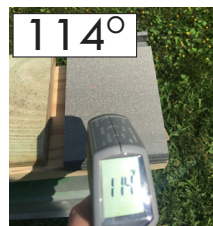
Where other products burn your skin, aluminum stays cool to the touch. In a test performed at 86° in direct sunlight, decking surface temperatures registered:



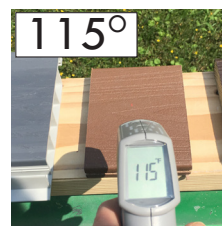
ALUMINUM



UNFINISHED
P.T. WOOD



RECYCLED
COMPOSITE



SOLID
COMPOSITE



VINYL
DECKING



STAINED
P.T. WOOD

SIZES

Deck boards - 6" W x 1" H - standard decking

Deck lengths - 10' to 24' in 2' increments; Longer lengths available by special order

FINISH

Textured AAMA 2604 powder coated finish meets or exceeds ASTM 8117 salt fog spray test

Standard linear finish



Non-linear finish (1,500 sf or more)



ACCESSORIES

Wood Screws (boxed 200 per) • Trim Screws - color matched (bagged 50 per)
16' Perimeter Nosing
16' F-Channel

WARRANTY

Limited Lifetime Transferable

COLORS

Ivory



Gray



Antique Bronze



ENVIRONMENTAL INFO

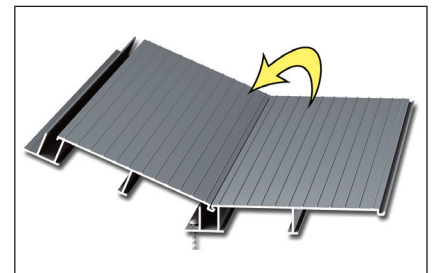
Raw materials origin - Ohio • Finished goods origin - Souderton, PA

ENVIRONMENTAL WORKING GROUP (EWG.ORG)

Recommended by the EWG as a healthier alternative for decking.
As cited at www.ewg.org/healthyhomeguide/decking/



The only deck board needed as the system does not require starter / main / finisher pieces. The boards interlock under a pressure locked seal.



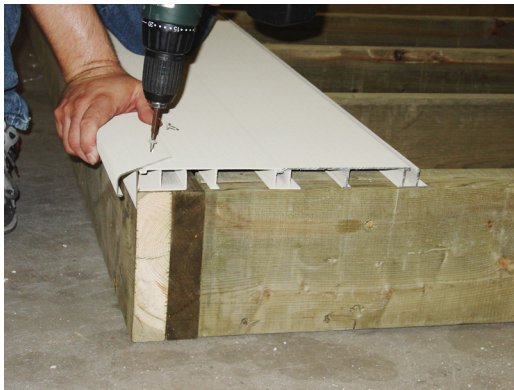
F-channel used to mount to building when running planks into them. Also used in inverted position when the last board needs cutting (for support).



Nosing used to trim out deck perimeter or as nosing / trim for stair treads

*Decking should not be used as the sole roofing solution over living space, consult installation guide.





Company Headquarters and Showroom
53 Souderton-Hatfield Pike • Souderton, PA 18964
(215) 721-7700
www.craftbilt.com

